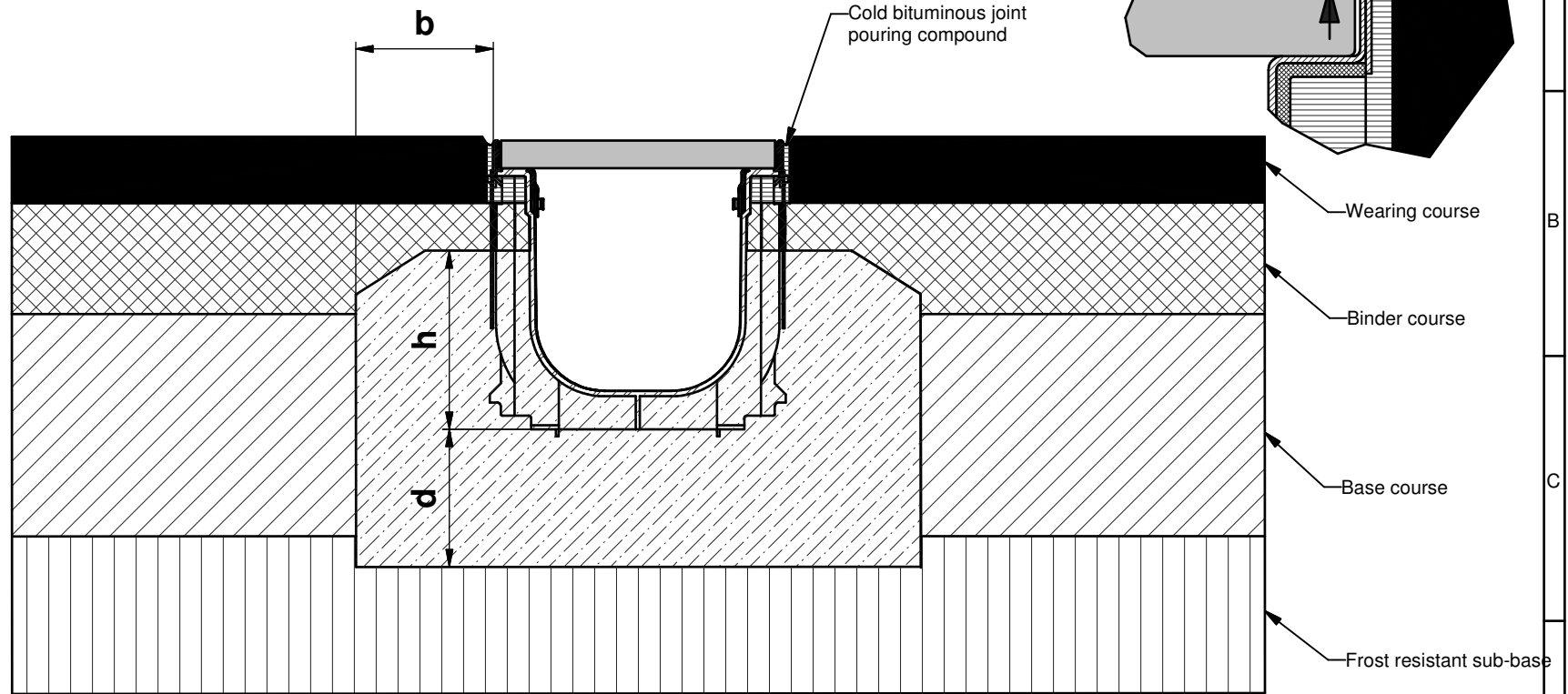



Installation example  
Asphalt cl. A 15 - B 125



\*  $h \geq$  Channel height - 8 cm

Category according to EN 1433 / DIN V 19580		A 15	B 125	C 250	D 400**	E 600	F 900	Applying to following channel systems: <b>RECYFIX SUPER KS 100, 150, 200, 300</b>
Foundation: with b / thickness d / height h (in cm)		10 / 10 / *	10 / 10 / *					
The named concrete quality is a minimum quality								
EN 206-1 / DIN 1045-2	without danger of frost on the lateral support	C 20/25	C 20/25					
	with danger of frost on the lateral support	C 25/30 XF1	C 25/30 XF1					
The installation examples / advise constantly are adapted to the technical conditions. With new editions older expenditures lose their validity. Before planning or installation please verify the current version at <a href="http://www.hauraton.com">www.hauraton.com</a>		Condition: 26.02.2007		Our general installation instructions apply.		Surface: Asphalt		 Werkstraße 13 76437 Rastatt Germany Tel. +49 (0) 72 22 9 58-0 Fax. +49 (0) 72 22 9 58-100 info@hauraton.com
** In Class D 400 not for use across the carriageway of highways or motorways in moving traffic. For this application we recommend our channel systems FASERFIX TRAFFIC SUPERBLOC or FASERFIX TRAFFIC GÜGIBLOC		Description: RF-KS-150 Typ 01_Einbau Klasse B 125 in Asphalt_GB						
Drawing-no.: C:\pdmwe\inventor\2007\05\0\0000014828.idw								